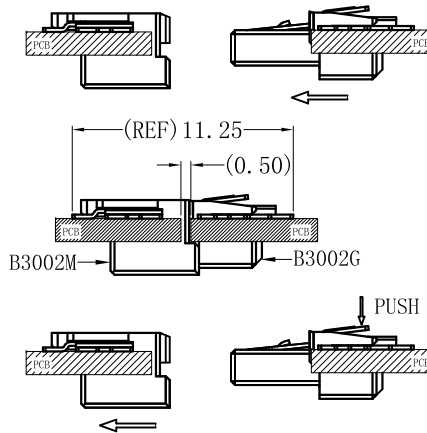
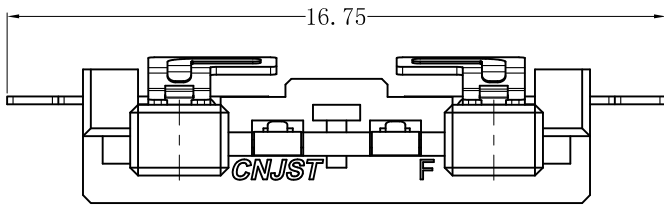
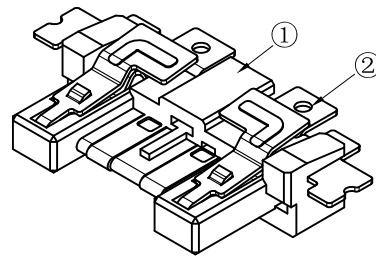
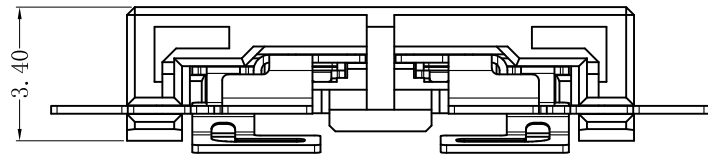
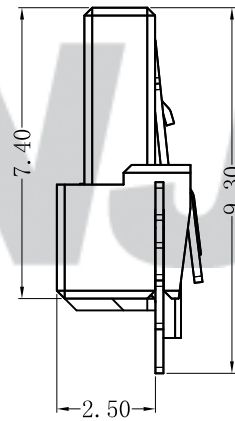
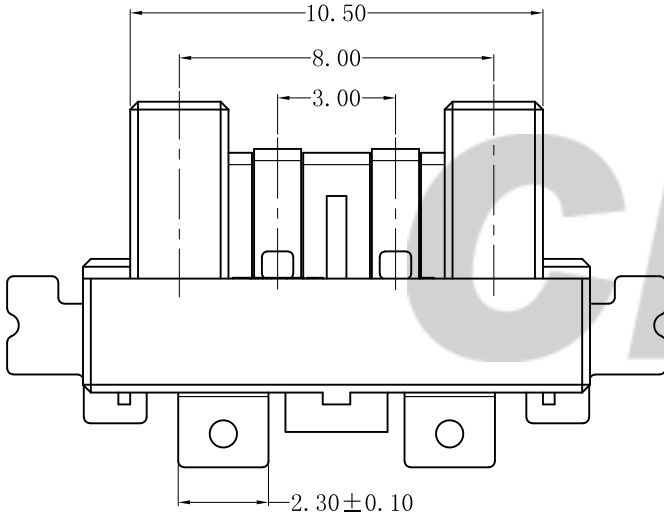


RoHS Compliant



MATING VIEW  
SCALE 1:2

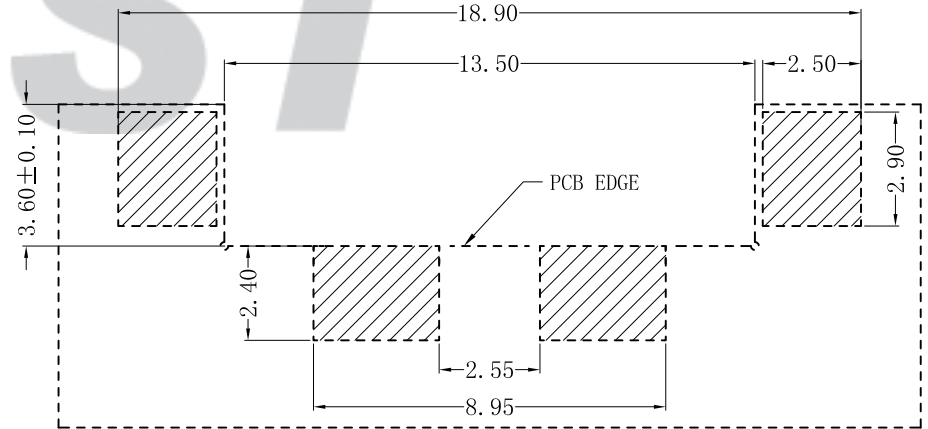


SPECIFICATION

- 1 Contact resistance:  $\leq 30m\Omega$
- 2 Insulation resistance:  $\geq 1000M\Omega$
- 3 Rated voltage: 200 V AC DC
- 4 Rated current: 1.0 A AC DC
- 5 Withstand Voltage: 1000V AC/minute
- 6 Temperature Range:  $-25^{\circ}C \sim +85^{\circ}C$

ORDER INFORMATION:

<b>B3002G-02-F2MB-R</b>			
PART No.			
No. OF CIRCUITS:	02	PACKAGING:	R=Reel
PLASTIC MATERIAL:	F2M=LCP (Nature)	PLATING:	B=Matte Sn



SUGGESTED PCB LAYOUT  
(COMPONENT SIDE)

Tolerance X.X ±0.30 X.XX ±0.20 X.XXX ±0.10 Angle ±3.0°	<b>CNJST</b> 捷仕泰企业		Drawn: 王丽君 2022. 12. 16
	Model No.: B3002G-02-F2MB-R		Checked: 吴丹平
	Model Name: 3.00mm pitch BTB MALE SMT		Approved: 林旭芝
	UNIT: mm		SCALE: FULL REVISION: C/0

REV.	DATE	DESCRIPTION	APPD.	NO.	DESCRIPTION	QTY	MATERIAL	PLATING/COLOR
C/0	2022. 12. 16	更新模板	王丽君	②	Contacts	2	Phosphor Bronze	Matte Sn
				①	Insulator	1	LCP (UL94V-0)	Nature